



2020 FLORIDA SNAP-ED IMPACT

UF/IFAS Extension Family Nutrition Program (FNP)

Providing SNAP Education
in Florida since 1996

SNAP (Supplemental Nutrition Assistance Program) Education helps limited-resource families eat healthier on a budget and be more physically active to reduce the risk of obesity and chronic diseases.

FLORIDA'S NEED

6.1 million
Floridians qualify
for SNAP Education¹
=
28.2%
of the FL population¹



2.8 million*
are food
insecure²
=
13.0%
of the FL population²

*Projected to increase due to COVID-19



1 in 5
youth has
obesity³



1 in 3
adults has
obesity⁴



48% of 9th-12th graders **do not**
eat vegetables every day⁵



34% of adults **do not**
eat fruit every day⁶

OUR REACH

In-person programming was restricted due to COVID-19.



13,767
classes taught

739,692 people
reached through:

nutrition education classes + policy, systems, and environmental (PSE) changes

1,025 partner
sites in



40
counties

UF | IFAS Extension
UNIVERSITY of FLORIDA

An Equal Opportunity Institution



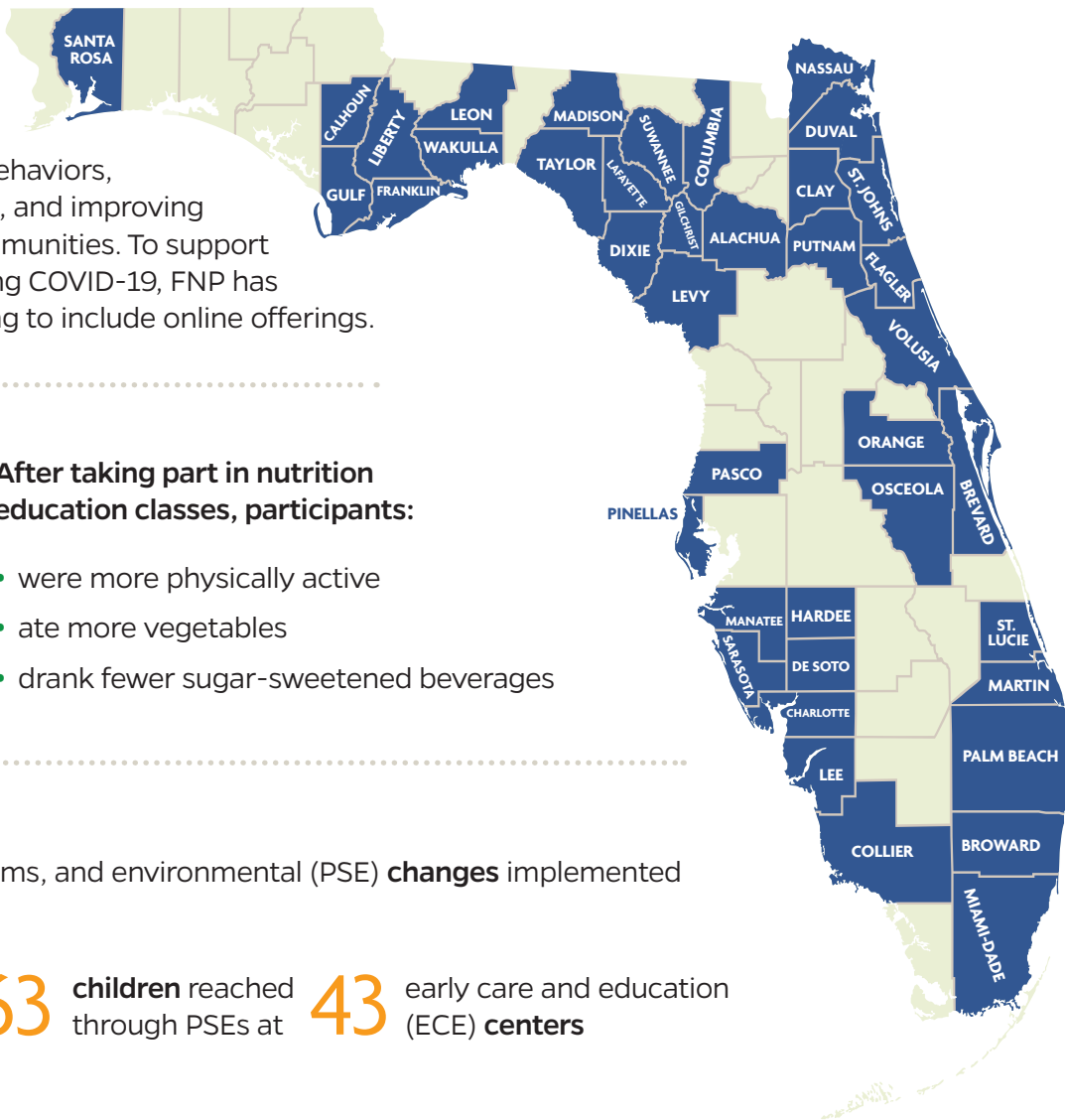
Sources:

1. U.S. Census Bureau American Community Survey, 2019
2. Feeding America, Map the Meal Gap, 2020
3. State of Florida Summary of School Health Services, 2018-2019; (Grades 1st, 3rd, and 6th)
4. Behavioral Risk Factor Surveillance System (BRFSS), 2018
5. Youth Risk Behavior Surveillance System (YRBSS), 2019
6. Behavioral Risk Factor Surveillance System (BRFSS), 2017

Learn more at  familynutritionprogram.org

OUR IMPACT


In 2020, FNP made an impact in each of these **40 counties** by influencing people's shopping and eating behaviors, increasing food access, and improving the health of local communities. To support health and safety during COVID-19, FNP has expanded programming to include online offerings.





After taking part in nutrition education classes, participants:

- were more physically active
- ate more vegetables
- drank fewer sugar-sweetened beverages

329 policy, systems, and environmental (PSE) **changes** implemented

 **2,763** children reached through PSEs at **43** early care and education (ECE) centers

 **26,033** youth and adults actively participated in **193** school, childcare, and community gardens

 **1,276** partner staff trained (in-person and online) on promoting healthy behaviors and reducing food insecurity in their communities

Partner with us for a healthier Florida!

¡Asóciase con nosotros para una Florida más saludable!

An nou travay ansanm pou nou gen yon Florid pi an sante!

This material was funded by the USDA's Supplemental Nutrition Assistance Program – SNAP.
This institution is an equal opportunity provider.

SNAP funding is provided through the Florida Department of Children and Families.

